

Products /  **CASTALDI** / TELLUX D44 / D44 TELLUX/F01 / D44K/F01-LWW-AL

TELLUX D44 D44K/F01-LWW-AL

TECHNICAL DATA

GENERAL



Item code	D44K/F01-LWW-AL
Place installation	outdoor
Name	D44 TELLUX/F01 / D44K/F01-LWW-AL ground recessed
Note	5000K on request.
Standard colour	AL - aluminium grey (similar to RAL 7040)
Variant colour	GR - graphite satin finish (similar to RAL 7022)
Environments	façades and architectural works, wellness, hallway, conference hall, places of worship



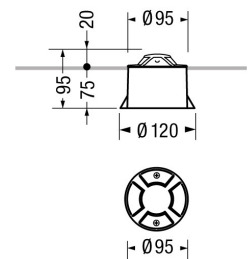
PHYSICAL

Installation type	ground recessed
Mounting type	with rough-in housing
Mounting note	On normally inflammable surfaces allowed.
Painting	Polyester powder coating, with a pluri-processed against corrosion (passed the exposure of over 1500 hours in a saline mist environment).
Screws	AISI 304 stainless steel screws.
Seals	Silicone Rubber.
Temperature glass	40°C
Static load	2000Kg
Body	Corrosion resistant die-cast aluminium body and dome.



DIMENSIONS

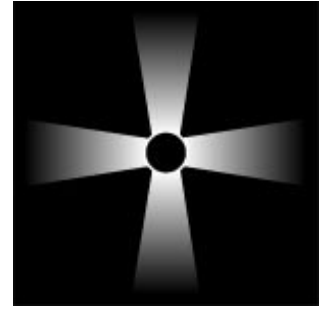
D: Total diameter device (mm)	95
Built-in shaped	Round



OPTICAL SYSTEMS

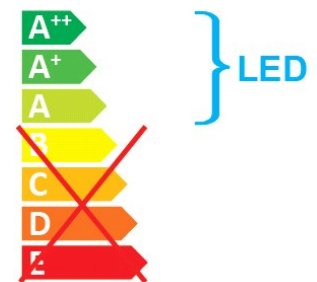
Opening beam
Diffuser

diffused
Unbreakable UV-resistant polycarbonate.



ENERGY SAVING

This luminaire contains built-in LED lamps
The lamps cannot be changed in the luminaire



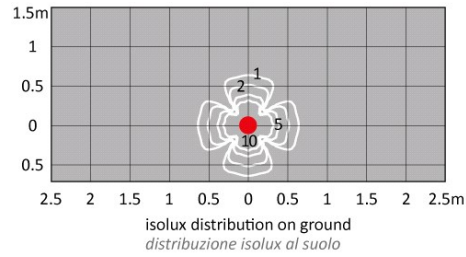
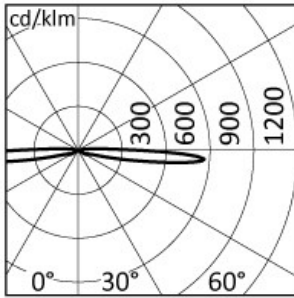
SOURCES

Source Type	Source Power	System Power	Source	Lamp Socket	Sources Temperature Colour	Nominal Flux	Output Flux	Source description
LED	1x1W	-	LED	-	3000K	93 lm	45 lm	-

ELECTRICAL

Ballast type	Electronic
Mounting ballast type	Integral
Line input	Pre-wired and tested with resin sealed watertight H07RN-F - H05RN-F (tellux/F01 model) cable (for a fast and secure connection to the main power line, use ACS/CR1 connector or similar).
Voltage	220-240V
Frequency	50-60Hz

PHOTOMETRICS



NORMS / DIRECTIVES

Norms	EN 60598-1, EN 60598-2-13
Directives	2014/35/UE, 2014/30/UE

ACCESSORIES

INCLUDED ACCESSORIES

Rough-in housing

Ground and Wall rough-in housing box, high impact resistant composite technopolymer (Code PT0781).



OPTIONAL ACCESSORIES

Electrical

Accessory code	ACS/CR1
Technical description	Fast IP68 connector 1bar (10m-1h) for cable Ø7-12mm - 3x1.5mm.

